



The Life Cycle of a Chicken

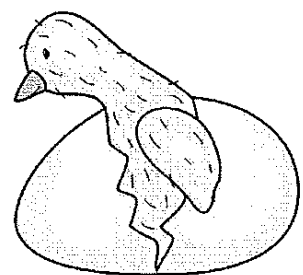
What came first- the chicken or the egg? This famous question has **perplexed** people for centuries. It is impossible to answer this question because the life cycle of a chicken does not begin or end. It is **continuous**!

A chicken's life begins when it hatches from an egg. After about three months, the chick becomes an adult. An adult female chicken is called a **hen**. An adult male chicken is called a **rooster**.

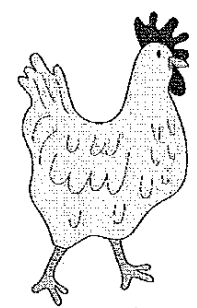
When a hen is six months old, she begins laying eggs. Up to six eggs are laid every day. If there is a rooster to fertilize the egg, the egg will eventually grow into a chick. If there is not a rooster around, this egg will never become a chick. However, it can become your breakfast!

Once an egg is fertilized, the chick begins to grow inside. It starts out as a **cell** in the mother's body. A cell is a single unit of life that you can't see. The cell grows for a day until the hen lays the egg. Then the mother sits on the egg to keep it warm. This is called **brooding**.

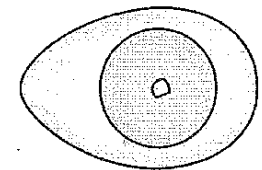
After about 21 days, the chick is ready to hatch. A chick hatches from the egg by pecking through the shell with its beak.



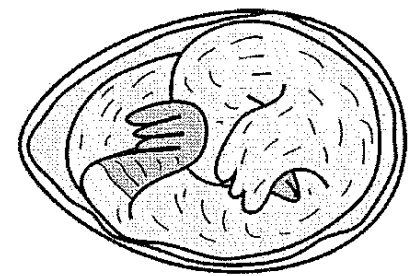
A chick hatches from an egg.



A chick grows into a hen or rooster.



When an egg is fertilized, it grows inside the hen for a day.

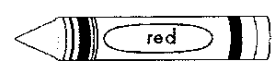


After the egg is laid, it takes 21 days for the chick to grow.

Answer the following questions. Underline the text evidence in the color indicated.

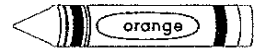
1. What is the meaning of "perplexed" as it is used in the first paragraph of the passage?

- a. asked
- b. thought
- c. confused
- d. answered



RI.2.4/ 3.4- Unknown Words

2. Read these sentences from paragraph 1 of the passage:

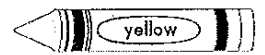


*It is impossible to answer this question because the life cycle of a chicken does not begin or end. It is **continuous**!*

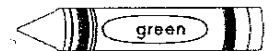
What does the word "continuous" mean in paragraph 1? (Pick all that apply.)

- a. short
- b. endless
- c. nonstop
- d. ongoing

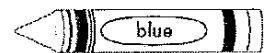
3. What is the meaning of the word "hen" in paragraphs 2 and 3?



4. What is the meaning of the word "rooster" in paragraphs 2 and 3?



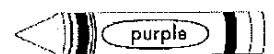
5. Read these sentences from paragraph 4 of the passage:



*It starts out as a **cell** in the mother's body. A cell is a single unit of life that you can't see. The cell grows for a day until the hen hatches the egg.*

What does the word "cell" mean in paragraph 4?

6. What is the meaning of the word "brooding" in paragraph 4?



- a. when a hen sits on an egg
- b. when a cell grows into a chick
- c. when an egg hatches from the shell
- d. when an egg grows inside of the hen